



# **Warrumbungle Shire Council**

## **Pollution Incident Response Management Plan for the Coonabarabran Quarry**

**Protection of the Environment Operations (POEO) Act 1997  
– Licence No 945**

**March 2019**



**Version Control**

Review Date: March 2020

Staff member responsible for review: Director Technical Services

Document	Version	Reviewed by	Approved by	Date
Coonabarabran Quarry- <i>Pollution Incident Response Management Plan</i>	DRAFT	Production Manager	Director Technical Services	18 December 2014
Coonabarabran Quarry- <i>Pollution Incident Response Management Plan</i>	FINAL	Production Manager / Environmental Health Officer	Director Technical Services	18 March 2019

## TABLE OF CONTENTS

1	INTRODUCTION.....	4
2	LOCATION .....	6
3	WHEN DOES THIS PLAN APPLY .....	8
4	IDENTIFICATION AND LIKELIHOOD OF HAZARDS .....	9
5	PRE-EMPTIVE MEASURES TO BE TAKEN .....	10
6	INVENTORY OF POLLUTANTS .....	13
7	RESPONSE TO A POLLUTION INCIDENT .....	14
8	COMMUNICATING WITH NEIGHBOURS AND MEDIA .....	15
9	MINIMISING HARM TO PERSONS ON AND OFF THE PREMISES.....	17
10	SITE EVACUATION .....	17
11	ACTIONS TO BE TAKEN DURING OR IMMEDIATELY AFTER A POLLUTION INCIDENT.....	17
12	SAFETY EQUIPMENT.....	17
13	STAFF TRAINING AND SITE INDUCTION.....	18
14	AVAILABILITY OF PLAN.....	18
15	TESTING THE PLAN.....	18
	APPENDIX A: SITE PLAN .....	19
	APPENDIX B - PHOTOGRAPHS.....	20
	APPENDIX C - POLLUTION INCIDENT REPORTING FORM .....	21
	APPENDIX D - PIRMP TRAINING REGISTER.....	23
	APPENDIX E - PRIMP TESTING AND UPDATE REGISTER .....	24
	APPENDIX F – EPA LICENCE .....	25

## 1 INTRODUCTION

The Coonabarabran Quarry is an active quarry supplying crushed basalt aggregate for bitumen sealing of roads and road base material. The quarry is licensed under the *Protection of the Environment Operations (POEO) Act 1997, Licence No 945*.

Approximately 100,000 tonnes per year of blasted rock is crushed on site to varying specifications and stockpiled on site for distribution.

A proportion of the crushed rock is used as road sealing aggregate and is secondary treated with precoat which is a bitumen based product before being stockpiled on site.

This Pollution Incident Response Management Plan (PIRMP) provides details of the processes which are in place in the event of a pollution incident:

- to ensure comprehensive and timely communication about the pollution incident, is provided to:
  - relevant Council staff,
  - the Environment Protection Authority (EPA),
  - other relevant authorities specified in legislation (including the Western NSW Local Health District, NSW Resources Regulator, WorkCover NSW and Coonabarabran Rural Fire Service), and
  - people outside the facility who may be affected by the impacts of the pollution;
- to minimise and control the risk of a pollution incident by identifying risks and developing planned actions to minimise and manage those risks;
- to ensure the PIRMP is implemented by trained staff, identifying persons responsible for implementing it, and ensuring that the PIRMP is regularly tested for accuracy, currency and suitability.

The operation of the quarry must comply with the:

- Work Health and Safety Act 2011 (WHS Act)
- Work Health and Safety Regulations 2011 (WHS Regs)
- Protection of the Environment Operations Act 1997 (POEO Act)
- Environment Protection Licence No. 945

Part 5.7A of the POEO Act requires that:

- All holders of Environment Protection Licenses must prepare a PIRMP; Licensees must keep the plan, in hard copy format, at the premises to which the license relates;
- Licensees must test the plan; and
- If a pollution incident occurs in the course of an activity, timely and coordinated actions are taken so that minimal harm to the environment is caused or threatened.

**PRINTED COPIES OF THIS PLAN ARE LOCATED AT:**

- Production Manager's Office
- Warrumbungle Shire Council Office in Coonabarabran
- Weighbridge Office at the quarry (while in operation), and
- Quarry Supervisor's vehicle on site while the quarry is in operation

A current copy of the PIRMP will be made available to the nearest neighbours (*refer Section 8*)

This document has been prepared in accordance with the *Environmental Guidelines: Preparation of Pollution Incident Response Management Plans* (EPA, 2012).

## 2 LOCATION

The address of the quarry is:

9010 Newell Highway  
COONABARABRAN NSW 2357

Coonabarabran Quarry (Lot 1, DP603692, Parish of Coonabarabran) is located on the Newell Highway, 6km south of Coonabarabran in New South Wales.

The stockpile site is south of the quarry on Lot 61, DP 871914.

The entrance to the quarry is on the eastern side of the Newell Highway.

Location of the quarry is shown Figure 1. A site map is provided in Appendix A.

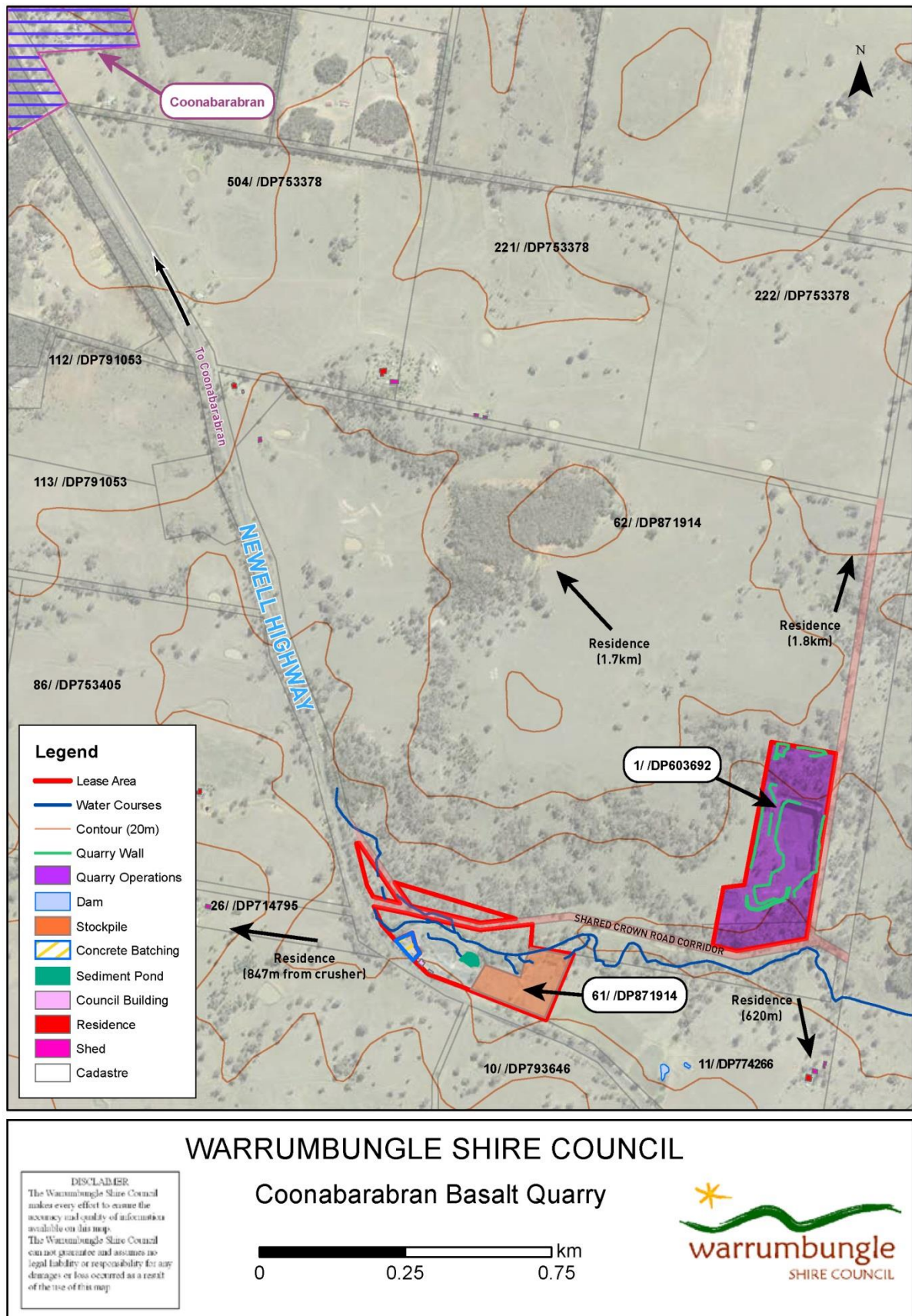


Figure 1. Location of Coonabarabran Quarry

### 3 WHEN DOES THIS PLAN APPLY

This PIRMP must be implemented if a pollution incident occurs at the Coonabarabran Quarry. Elements of the PIRMP may also be applicable if a safety incident occurs at the quarry.

The definition of a pollution incident is:

*A **pollution incident** means an incident or set of circumstances during or as a consequence of which there is, or is likely to be, a leak, spill or other escape or deposit of a substance, as a result of which pollution has occurred, is occurring or is likely to occur. It includes an incident or set of circumstances in which a substance has been placed or disposed of on premises, but it does not include an incident or set of circumstances involving only the emission of any noise.*

A pollution incident is required to be notified if there is a risk of “material harm to the environment”, (*S 147 POEO Act*) and is defined as:

- (a) harm to the environment is material if:
  - I. it involves actual or potential harm to the health or safety of human beings or to ecosystems that is not trivial, or
  - II. it results in actual or potential loss or property damage of an amount, or amounts in aggregate, exceeding \$10,000 (or such other amount as is prescribed by the regulations), and
- (b) loss includes the reasonable costs and expenses that would be incurred in taking all reasonable and practicable measures to prevent, mitigate or make good harm to the environment.



## 4 IDENTIFICATION AND LIKELIHOOD OF HAZARDS

The quarry is relatively remote and the surrounding site is covered by a mix of grazing land and timbered country. The nearest buildings are a residence and sheds approximately 600 metres south of the southern edge of the quarry.

The quarry is within Castlereagh River catchment, which is within the Murray–Darling Basin.

Sediment runoff from the quarry and stockpile areas is directed into sediment basins in order to ensure any discharge from the ponds meets the EPA guidelines.

**TABLE 1: Identification and Likelihood of Hazards at Coonabarabran Quarry**

Hazard	Likelihood	Impact	Factors Increasing Likelihood
Injuries to persons from vehicles on site	Low	High	<ul style="list-style-type: none"> <li>• Operations on site</li> <li>• Unauthorised access</li> </ul>
Injuries to persons from falls on site, including falls into water	Low	High	<ul style="list-style-type: none"> <li>• Operations on site</li> <li>• Unauthorised access</li> </ul>
Discharge of sediment laden water	Low	Low	<ul style="list-style-type: none"> <li>• Operations on site</li> <li>• Unauthorised access</li> <li>• Unauthorised use of sediment control ponds</li> </ul>
Water pollution - general	Low	Medium	<ul style="list-style-type: none"> <li>• Operations on site.</li> <li>• Unauthorised access</li> </ul>
Air pollution – dust	Low	Low	<ul style="list-style-type: none"> <li>• Operations on site</li> <li>• Windy conditions</li> <li>• Low soil moisture</li> </ul>
Air pollution – fires in vehicles	Very Low	Low	<ul style="list-style-type: none"> <li>• Operations on site</li> <li>• Unauthorised access</li> </ul>
Land pollution- illegal dumping of waste	Very Low	Low	<ul style="list-style-type: none"> <li>• Unauthorised access</li> </ul>
Noise	Very Low	Low	<ul style="list-style-type: none"> <li>• Operations on site</li> <li>• Unauthorised access</li> </ul>

## 5 PRE-EMPTIVE MEASURES TO BE TAKEN

Pre-emptive actions to be taken to minimise or prevent any risk of harm to human health or the environment are identified in the following Table 2:

**TABLE 2: Pre-emptive Measure to prevent Pollution Incidents**

Hazard	Pre-emptive Action to Minimise Risk
Injuries to persons from vehicles / plant on site	<p>Implement Coonabarabran Quarry Safety Management Plan.</p> <p>Ensure there are clear demarcations between the various operating areas of the quarry.</p> <p>Ensure adequate warning signage is maintained.</p> <p>All plant and machinery to comply with WSC minimum operating standards (currently RMS standards).</p> <p>Ensure all personnel are inducted onto the site by the Quarry Supervisor including:</p> <ul style="list-style-type: none"> <li>• Safe Work Method System procedures</li> <li>• All personnel to comply with WSC Policy on P.P.E</li> <li>• Compliance with WSC Fit for Work Policy</li> <li>• Compliance with WSC Plant Maintenance procedures and systems</li> </ul> <p>Maintain fencing and access controls to prevent unauthorised access.</p> <p>Any unauthorised persons found on site shall be immediately escorted from the site.</p> <p>Personnel shall remain outside the working distance of plant when operating, and no less than 20m away.</p>
Injuries to persons from falls on site, including falls into water	<p>Implement Coonabarabran Quarry Safety Management Plan.</p> <p>Personnel shall not stand close to edges where potential exists to fall from dangerous heights or into water.</p> <p>Personnel shall not stand close to the base of high quarry faces.</p> <p>Maintain fencing and access controls to prevent unauthorised access.</p> <p>Ensure adequate warning signage is maintained.</p> <p>Site to be kept clear of materials and debris.</p> <p>Personnel to wear approved footwear.</p> <p>Personnel shall be aware of uneven surfaces and proceed with care.</p> <p>Carry out periodic inspections of high quarry face areas.</p> <p>Carry out periodic site inspections when site is unoccupied.</p> <p>Any unauthorised persons found on site shall be immediately escorted from the site.</p>

**Warrumbungle Shire Council**  
**Pollution Incident Response Plan for the Coonabarabran Quarry**  
**18 March 2019**

Hazard	Pre-emptive Action to Minimise Risk
Discharge of sediment laden water	<p>Install sediment control basins in accordance with Department of Environment &amp; Climate Change NSW Guidelines –“Managing Urban Stormwater – Soils and Construction - Volume 2E-Mines and Quarries” and maintain to minimise generation of sediment laden water.</p> <p>Undertake water quality testing to ensure total suspended solids meets the Department of Environment guidelines.</p> <p>Follow approved procedures for reuse of water from sedimentation ponds (eg for dust control).</p>
Water pollution – general	<p>Refueling shall only be carried out in a designated area.</p> <p>Fuel for stationary plant is stored in bunded areas.</p> <p>Vehicles will be parked in designated areas after hours.</p> <p>Precoating will be carried out in accordance with standard operating procedures and the precoating material stored in a bunded area.</p> <p>Precoated aggregate will be stored in the designated area of the stockpile site (see site plan).</p> <p>Spill kit shall be located and maintained on site during all operations and regularly inspected and maintained.</p> <p>Personnel shall be trained in use of spill kits.</p> <p>All material contaminated by fuel and oil spills to be removed and stored adjacent to the precoat stockpile site before disposal off-site to a registered disposal area.</p>
Air pollution – dust	<p>Undertake blasting in accordance with relevant guidelines and implement appropriate blast suppression measures.</p> <p>Undertake blasting and large dust generating activities when wind is not directing dust towards residences or the Newell Highway.</p> <p>Disturbed areas shall be minimised.</p> <p>Limit drop heights when loading trucks from stockpile.</p> <p>Use water from sediment ponds when necessary to minimise generation of dust from stockpiles and trafficable areas.</p> <p>Cover all loads during transport off site.</p>
Air pollution – fires in vehicles	<p>Refueling shall be carried out in a designated area with a plastic lined earthen bund.</p> <p>Maintain clean and organised work areas to help prevent accidents.</p> <p>Maintain vehicles and plant equipment in accordance with manufacturer’s specifications.</p> <p>Fire extinguishers shall be carried in plant.</p>

**Warrumbungle Shire Council**  
**Pollution Incident Response Plan for the Coonabarabran Quarry**  
**18 March 2019**

---

<b>Hazard</b>	<b>Pre-emptive Action to Minimise Risk</b>
Land pollution – illegal dumping of waste	Maintain fencing and access controls to prevent unauthorised access. Ensure adequate warning signage is maintained.  Any unauthorised persons found on site shall be immediately escorted from the site.
Noise and vibration	Undertake blasting in accordance with relevant guidelines. Implement Coonabarabran Quarry Safety Management Plan Personnel shall be trained in hearing protection. Hearing protection to be worn when exposed to excessive noise. Visually inspect plant and equipment for defects.

## 6 INVENTORY OF POLLUTANTS

Chemical	Quantity	Location
Diesel fuel	Up to 40,000 litres	Crusher—15,000 litres in tank in contained section.  Precoating Plant—20,000 litres in bunded area.  Some fuel stored temporarily on site in tanks on light vehicles.
Precoating material	20,000 litres	Stockpile site in bunded area.

Small amounts of lubricants, hand cleaners etc are kept on site during operation of machinery.

Portaloos on site are regularly emptied and maintained.

Sediment laden runoff water from the quarry and stockpile site must be captured in the sediment basins.

## 7 RESPONSE TO A POLLUTION INCIDENT

If a pollution incident occurs, the following organisations shall be contacted in the order listed.

- 1 Call 000 if the incident presents an immediate threat to human health or property. Fire and Rescue NSW, the NSW Police and the NSW Ambulance Service are the first responders, as they are responsible for controlling and containing incidents.
- 2 The Production Manager - Warrumbungle Shire Council, or if unavailable the Director of Technical Services – Warrumbungle Shire Council:

**Production Manager** – 0407 105 538

**Director Technical Services** – 0417 464 438

- 3 The Environmental Health Officer – Warrumbungle Council – **0429 774 463**

- 4 Environment Protection Authority

**Dubbo Regional Office** – **02 6883 5333**

**Pollution Line** - **131 555** (24 hours)

- 5 Western NSW Local Health District

**Dubbo Regional Office** – 02 6809 8979

**Public Health Officer** on Call (24 hours) – 0418 866 397

- 6 Department of Planning and Environment

**NSW Resources Regulator** – 1300 814 609 (24 hours)

- 7 Work Cover NSW – Hotline – 13 10 50

- 8 Fire and Rescue NSW - **Coonabarabran Rural Fire Service** – 02 6826 6300

- 9 Warrumbungle Shire Council – 02 6849 2000

**Note: Council communicates on site using UHF Channel 37 and mobile phones.**

Calls 1 and 2 shall be made by the Quarry Supervisor or another responsible site representative immediately the pollution incident occurs.

The Production Manager shall then assume responsibility for responding to the incident, including contacting other response agencies.

**Note: The POEO Act requires that this contact process should be initiated immediately after a pollution incident occurs.**

## **8 COMMUNICATING WITH NEIGHBOURS AND MEDIA**

In the event of a pollution incident occurring at the quarry, the Production Manager will arrange for direct contact with the owners and occupiers of nearby premises who may be affected by the incident. If neighbours cannot be reached by phone a door knock will be carried out.

If the pollution incident has implications for the wider community, relevant emergency services standard communications procedures will be used to advise community members and the media. The Manager Roads Services shall contact Council's Director Corporate and Community Services to initiate the development and implementation of a communications plan for the incident.

Advice to be provided to the community shall include:

- Air pollution incident – persons in the affected area should close windows and doors and remain inside for the duration of the incident.
- Contaminated water runoff – persons should avoid using or entering water in downstream creeks.

**Warrumbungle Shire Council**  
**Pollution Incident Response Plan for the Coonabarabran Quarry**  
**18 March 2019**

---

**Property Owners Contact Details**

Property Name	Property Address	Owners	Owner Address	Town	Phone Number
Weeroona	9051 Newell Highway COONABARABRAN	Bruce Ronald Poole	PO Box 292	COONABARABRAN NSW 2357	6842 1681
Warrumbrae	9204 Newell Highway COONABARABRAN	Stewart Clifford Rodgers	PO Box 357	COONABARABRAN NSW 2357	
	9009 Newell Highway COONABARABRAN	Telstra Corporation Limited	C/- Jones Lang Lasalle	Locked Bag 3 Hutt Street ADELAIDE SA 5000	
Denistone Park	9182 Newell Highway COONABARABRAN	David William Blackburn & Annabel Louise Blackburn	PO Box 200	COONABARABRAN NSW 2357	
	8934 Newell Highway COONABARABRAN	Warrumbungle Shire Council	PO Box 191	COONABARABRAN NSW 2357	6849 2000
Coolcappa	528 Purlawaugh Road COONABARABRAN	Wayne Frances Oakes & James Edward Prosser-Fen	PO Box 1070	ORANGE NSW 2800	
	6958 Warrumbungle Way COONABARABRAN	Allan Joseph Mathews & Anne Dorothy Mathews	8 Knight Street	COONABARABRAN NSW 2357	6842 1415
	98 Mirii Lane COONABARABRAN	Helen Ann Rayner	PO Box 241	COONABARABRAN NSW 2357	6842 1606
	9053 Newell Highway COONABARABRAN	Bruce Searle	9247 Girrahween Oxley Highway	COONABARABRAN NSW 2357	



## **9 MINIMISING HARM TO PERSONS ON AND OFF THE PREMISES**

The Production Manager is authorised to approve operations or associated activities at the quarry. The only persons authorised to be on the quarry site shall be Council staff, authorised contractors engaged in quarry operations, or other persons under the immediate supervision of Council staff.

The risk of harm to persons on the premises shall be minimised by implementing the pre-emptive measures to minimise risk as set out in Table 2.

## **10 SITE EVACUATION**

As part of the site induction, the Quarry Supervisor shall establish an evacuation and emergency assembly point with the Coonabarabran Quarry Safety Management Plan (SMP). In case of an evacuation the Quarry Supervisor shall notify all persons on site to evacuate the site. Persons shall not leave the assembly point until instructed to do so by the Quarry Supervisor. Any need to evacuate and any incident / injury and first aid treatment shall be recorded in accordance with the SMP.

## **11 ACTIONS TO BE TAKEN DURING OR IMMEDIATELY AFTER A POLLUTION INCIDENT**

- Address the immediate cause of the incident.
- Identify any injured persons, ensure their immediate safety and render first aid. Commence contact process set out above.
- Cooperate with emergency services attending the site.
- Production Manager to assume control.
- Production Manager to record incident and develop and implement incident response plan.

If required the Production Manager to develop communications plan in consultation with Council's Director Corporate and Community Services.

## **12 SAFETY EQUIPMENT**

PPE is stored in vehicles and site office.

Spill kits are stored at stationary plant and refueling locations.

## 13 STAFF TRAINING AND SITE INDUCTION

All staff working at the quarry will be trained to ensure they understand the Coonabarabran Quarry Safety Management Plan and this Pollution Incident Response Management Plan. A record of the training shall be kept in the Staff Training Register in Appendix D.

The Quarry Supervisor is responsible for ensuring that prior to work being undertaken at the quarry, all personnel entering the quarry receive an induction in accordance with the Coonabarabran Quarry Safety Management Plan (SMP). The purpose of the induction is to ensure that all personnel entering the quarry are aware of the hazards and control measures within the quarry.

The Production Manager shall carry out regular audits to ensure staff training and inductions are carried out.

The Quarry Supervisor shall ensure that all contractors required to operate plant and equipment are appropriately qualified, competent, licensed or trained to operate the item of plant or equipment safely and competently. A record of appropriate qualifications, competencies and licenses shall be made and kept on site.

## 14 AVAILABILITY OF PLAN

Printed copies of this plan are located at:

- Office of the Production Manager
- Warrumbungle Shire Council Office in Coonabarabran
- Weighbridge Office at the quarry (while in operation), and
- Quarry Supervisor's vehicle on site while the quarry is in operation

A current copy of the PIRMP will be made available to the nearest neighbours (*refer section 8*).

## 15 TESTING THE PLAN

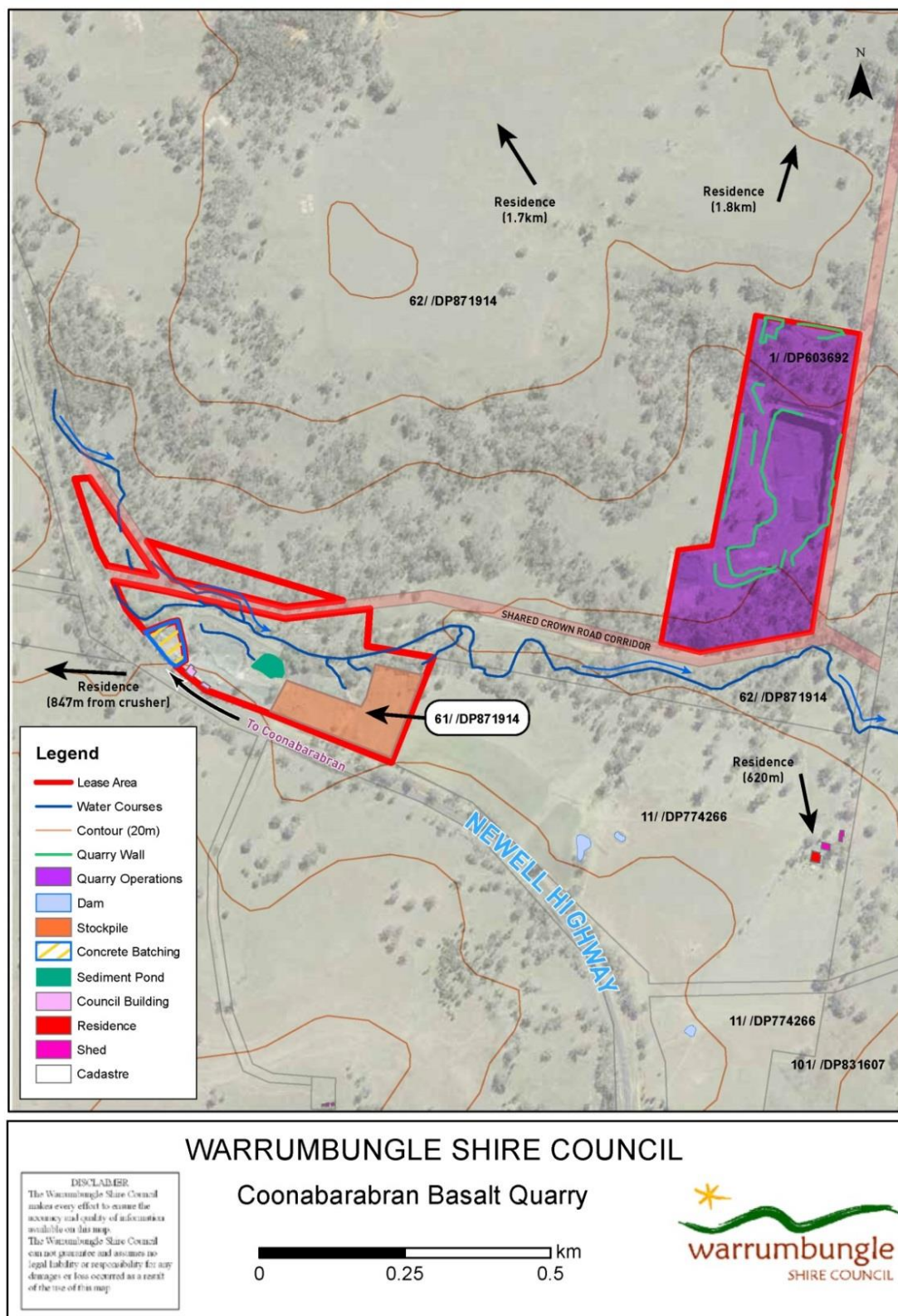
PIRMPs must be tested routinely at least once every 12 months. This testing is to be carried out in such a manner as to ensure that the information included in the plan is accurate and up to date, and that the plan is capable of being implemented in a workable and effective manner.

This plan shall be routinely tested by:

- Conducting an incident response and evacuation drill at the site based on a possible incident scenario.
- Simulating the communications process required as part of the incident response.

A written evaluation of these tests shall be undertaken, and records of these evaluations shall be retained on Council's record system.

## APPENDIX A: SITE PLAN



## APPENDIX B - PHOTOGRAPHS

## APPENDIX C - POLLUTION INCIDENT REPORTING FORM

### Pollution Incident Reporting form

INCIDENT No:

TIME:

DATE:

DURATION OF INCIDENT:

NATURE OF INCIDENT:

WEATHER CONDITIONS:

THE LOCATION OF THE PLACE WHERE POLLUTION IS OCCURRING OR IS LIKELY TO OCCUR:

THE NATURE, THE ESTIMATED QUANTITY OR VOLUME AND THE CONCENTRATION OF ANY POLLUTANTS INVOLVED (IF KNOWN):

THE CIRCUMSTANCES IN WHICH THE INCIDENT OCCURRED, INCLUDING THE CAUSE OF THE INCIDENT (IF KNOWN):

THE CORRECTIVE ACTION TAKEN OR PROPOSED TO BE TAKEN TO DEAL WITH THE INCIDENT AND ANY RESULTING POLLUTION OR THREATENED POLLUTION (IF KNOWN):

HAS EPA DIRECTED COUNCIL TO NOTIFY NEIGHBOURS?

YES

NO

IF NOT, HAS COUNCIL VOLUNTARILY NOTIFIED NEIGHBOURS?

YES

NO

**Signature:** .....  
**Production Manager, Coonabarabran Quarry**  
**Warrumbungle Shire Council**

**Date:** .....

**Signature:** .....  
**Director, Technical Services**  
**Warrumbungle Shire Council**

**Date:** .....

Has Council Been Notified?    Yes                      No

Has Environment Protection Authority (EPA) Been Notified?            Yes      No

Has NSW Ministry of Health (via Public Health Units) Been Notified?            Yes                      No

Has WorkCover NSW Been Notified?            Yes      No

Has Local Fire and Rescue NSW Been Notified?    Yes                      No

## APPENDIX D - PIRMP TRAINING REGISTER

Staff Training Register		
Date	Staff Member	Brief Description of Training Task
21/02/2019	Terry Hadfield	Pollution Incident Scenario Drill – Spill of Precoat ( <i>Minor</i> )

## APPENDIX E - PRIMP TESTING AND UPDATE REGISTER

PIRMP Testing & Update Register				
Date	Routine Testing	Routine Update	Post Incident Updates	7 New Copies Distributed?
21/02/2019	Completed	Completed	All clear – correct action implemented	Yes



## APPENDIX F – EPA LICENCE

Section 55 Protection of the Environment Operations Act 1997

### Environment Protection Licence

Licence - 945



#### Licence Details

Number:	945
Anniversary Date:	25-August

#### Licensee

WARRUMBUNGLE SHIRE COUNCIL  
PO BOX 191  
COONABARABRAN NSW 2357

#### Premises

BORAL COUNTRY - CONCRETE & QUARRIES  
OXLEY HIGHWAY  
COONABARABRAN NSW 2357

#### Scheduled Activity

Crushing, Grinding or Separating  
Extractive Activities

#### Fee Based Activity

#### Scale

Crushing, grinding or separating	> 30000-100000 T processed
Land-based extractive activity	> 50000-100000 T extracted, processed or stored

#### Region

North - Dubbo  
48-52 Wingewarra Street  
DUBBO NSW 2830  
Phone: (02) 6883 5330  
Fax: (02) 6884 8675  
PO Box 2111 DUBBO  
NSW 2830